

RKG-1 ENTRY DOOR ASSEMBLY STATION

SPARE PARTS

Interior

Door Feeder

Jamb Routers

Exterior

Architectural

Patio Door Line

Automatic Saws

Entry Door Line

Pre-Fit Jamb

Bi-fold





Making Quality Door and Jamb Machinery Since 1947

INNOVATION | QUALITY | HONESTY

Order Today!
Call 1.800.553.5825

About KVAL Machinery

KVAL was started in the mid 1940's by AA Kvalheim. A Norwegian trained furniture maker, who turned to cabinetmaking and carpentry, and eventually machinery manufacturing after immigrating to the United States. One product produced in the mid 40's was a panel saw which helped expand the fledgling flush door industry that was developing around the Walled Lake, Michigan area. Early door sizing systems were supplied to companies like Young Door, Walled Lake, Arrow Door, and out on the west coast to Cal Wood Door.

In the mid 1950's, sons Andy and Irv Kvalheim joined in the business. As the company grew, so did the line of products. Door pre-hanging equipment was designed for distributors and high production equipment was designed for manufacturers producing pre-fit units. During the growth years of the 60's, the company continued as an innovator in the industry with automatic machines for jamb processing, casing trimmers and updated door sizers. As the 70's began, customers began demanding even more automation to cut labor costs and improve product quality. Kval responded with bi-fold door assembly and pre-hanging machines featuring fully automatic screw driving systems.

Today, Jerry, David, and Mark Kvalheim...the three grandsons of AA Kvalheim have joined the firm. The company family has also grown to include George Kameoka as head engineer, and Mark Smith as one of the managing partners.

KVAL products have continued to evolve and are now faster than ever, but are easier to set up, and produce higher quality doors than ever before. Recent technical innovations include CNC controls and the complete replacement of air logic control systems with solid state programmable controllers. Fully automatic positioning and sequencing for door and jamb equipment. Digital readouts with touchscreen controls to guarantee accurate setup and operation. When looking for quality door, jamb, casing, and related machines, look to the leader in the industry for over six decades!

Look to KVAL!!!

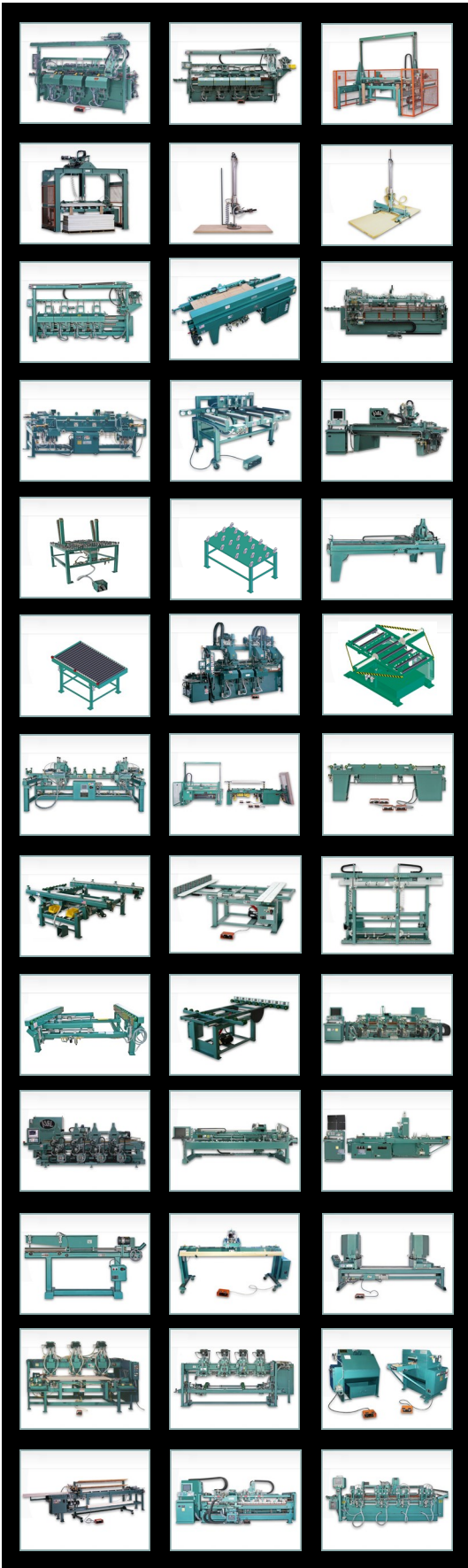


© KVAL Inc. All rights reserved

This document may not be copied, photocopied, reproduced, transmitted, or translated in any form or for any purpose without the express written consent of KVAL Inc.
KVAL Inc. reserved the rights, without notice, to change design and construction of any products.

Price are subject to change without notice.
Errors in description, photography, or typographical errors are subject to correction.

Printed in the United States of America
Published on 10/1/2014



To see our full line of products,

go to kvalinc.com and type in

RKG-1

Find

RKG-1

RKG-1

The KVAL RKG-1 Entry Door Assembly Station makes it possible to assemble steel, fiberglass, or wood door units with sidelights, patio door units or double door units.

The design of this RKG-1, eliminates the manual lifting and turning of the doors during the assembly of a door unit with multiple parts. This station is designed to receive a door panel with the hinge jamb or mull post attached, exterior side up. This station would typically be used immediately after a Acrobat or the Hinge Jamb Attaching Station.

For a double door unit, the left-hand door panel would be prepared and rolled into the machine. The door panel, with the jamb attached, would then be rotated 90 degrees counter clockwise and lowered onto non-marking polyurethane wheels. These wheels are positioned to support the door on the top and bottom rail. They provide clearance for door light frames or raised molding. The second door, with the jamb attached is then rolled into the station, rotated, and positioned next to the first door. The pair of doors is then lowered onto jamb support plates.

The operators, one working at the top of the door unit and one working at the sill end, simultaneously install the head jamb and sill. A clamping system holds the components in place so they can accurately fasten the head and sill to the side jambs. After the frame has been assembled, the door unit is raised with the polyurethane rolls so that it can be safely rolled to the next station.

The standard RKG-1 will accommodate doors 6'-8" high and doors that vary in width from 2'6" to 3'0". With the 8'0" door capacity option, the RKG-1 can be set up to accommodate doors that vary in height from 6'8" to 8'0". The RKG-1 will accommodate all jamb widths.





RKG-1



Cylinder, Advance, 240 X 2"

KVAL P/N: **ADV240A1B**

Cylinder, Advance, 300 X 3"

KVAL P/N: **ADV300A1G**

Flanged Wheel Bearing, Regular Duty, 1/2 ID - 1 3/8 OD, Flange Width 7/16, Flange OD 1 1/2.

KVAL P/N: **BAI150050**

Safety Exhaust Ball Valves, 1/4" NPT

KVAL P/N: **BBVALVE04**

Safety Exhaust Ball Valves, 1/2" NPT

KVAL P/N: **BBVALVE08**

Cylinder, Bimba 124DP 4" Double Acting Rear Pivot Double End Mount 1-1/4 Bore.

KVAL P/N: **BIM124DP**

Cylinder, Bimba 241DP 1" Double Acting Rear Pivot Double End Mount 1-3/4 Bore.

KVAL P/N: **BIM241DP**

Cylinder, Bimba 249DP 9" Double Acting Rear Pivot Double End Mount.

KVAL P/N: **BIM249DP**

Cylinder Hardware, Bimba 240 Foot Mount Bracket 1.037 Bore, 3" Long Slotted Base

KVAL P/N: **BIMC1337**

Cylinder, Bimba, Hardware, 2 Piece Pivot Bracket, .250 Bore 2.12 Slotted Base

KVAL P/N: **BIMD1360**

Cylinder, Bimba, Hardware, Clevis 120, 170, 7/16-20 NF, 1.69 Long, .38 Pin

KVAL P/N: **BIMD2311**

Cylinder, Bimba, Hardware, 120,170 Foot Bracket .75 Bore 2.50 Long Slotted Base

KVAL P/N: **BIMD241**

Shock Enidine OEM .50B 3/4-16 Thread 1/2 Stroke.

KVAL P/N: **ENIOEM050**

Directional Control Valve, Fabco 18 Series, PMD-4, 1/8" NPT, 4-WAY, Detented(Push-Pull), Panel Mount Button

KVAL P/N: **FAB18PMD4**

Valve, Fabco, Repair Kit, 1800-944, Spool With O-Rings, For Push Pull Valve

KVAL P/N: **FAB18PMD4-RK**

Valve, Fabco, 1800 PMS-4 1/8, 4 Way Single 18 Series Palm Button Actuated,

KVAL P/N: **FAB18PMS4**

To see our full line of products,

go to kvalinc.com and type in

RKG-1

Find

RKG-1

RKG-1



Valve, Fabco, Repair Kit, 1800-904, Spool With O-Rings, For Spring Return Valve

KVAL P/N: FAB18PMS4-RK



Bearing, Pillow Block, TPB 250 X 1, Tapped Base Setscrew Locking Relube.

KVAL P/N: HUBTPB253



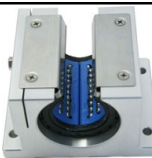
Bearing, Pillow Block, TPB 250 X 1-1/2, Tapped Base Setscrew Locking Relube

KVAL P/N: HUBTPB259



Valve, Humphrey, 4-Way Toggle 3-Position, Detented Valve.

KVAL P/N: HUM41TD3



Bearing, 1-1/2" Open Super Linear Pillow Block

KVAL P/N: INASPB240



Bearing, 1" Closed Super Linear Pillow Block

KVAL P/N: INASPBC160



Linear Bearing Block With Standard 1 Bearing & 2 Seals 2-3/4 Long 2 Square.

KVAL P/N: KVALBB16A



Linear Bearing Block, With Steel Linear Ball Bearing, 1" Dia., 2 Seals & Zirk Fitting Hole, 2 -3/4" Long 2 Square..

KVAL P/N: KVALBB16B



Fastener, Washer, 1-3/8" I.D. 1-7/8" O.D., .025, Steel

KVAL P/N: MC3088A419



Split Collar, One Piece, 1" Dia., Steel

KVAL P/N: SC116F



Split Collar, One Piece, 1-1/2" Dia., Steel

KVAL P/N: SC124F



Seal 1-ID 1.567-OD Single Lip

KVAL P/N: SEAL16



Filter, 1/2" With Auto Drain, SMC, AF40-N04D-Z

KVAL P/N: SMC40004F



Regulator 1/2" NPT, SMC, AR40K-N04-Z

KVAL P/N: SMC40004R



Regulator, SMC, 1/2" NPT Port With Back-flow Mechanism With Gauge

KVAL P/N: SMC40004R-K



Speed Controller, In-line, 1/8"

KVAL P/N: SMCAS2001





RKG-1



Speed Controller, One-touch Fitting, 1/4 NPT - 1/4" OD, Elbow & Universal Types, NAS2201F-N02-07S .
KVAL P/N: SMCAS2201F2



Pressure Gauge, SMC, K50, 1/4 NT Thread, 160 PSI

KVAL P/N: SMCK12



Valve, SMC 4-Way Single Pilot With 1/4 Base

KVAL P/N: SMCNVSA03



Generation 2, 25mm STAR Ball Rail Bearing STA165121420 With (2)161922130 Seals Installed
KVAL P/N: STA165121420S



Bearing, Super 16, 1" Closed Linear Ball Bearing

KVAL P/N: THOLBB16



Roller Green Polytube 3 Dia X 3/4 Wide 1-3/8-ID 60 Duro

KVAL P/N: WESPT7612



Making Quality Door and Jamb Machinery Since 1947

Parts Order Form

INNOVATION | QUALITY | HONESTY

Billing Address

Company: _____
 Your name: _____
 Address: _____
 City/State/Zip: _____
 Phone: _____

Shipping Address

Company: _____
 Your name: _____
 Address: _____
 City/State/Zip: _____
 Phone: _____

Quantity	Part Number	Item Description	Unit Cost	Total Cost

Shipping Preference

UPS Next Day Early AM FedEx Priority Overnight
 UPS Next Day FedEx Standard Overnight
 UPS 2nd Day FedEx 2nd Day
 UPS 3 Day Select FedEx Express Saver
 UPS Ground FedEx International Priority
 Common Carrier FedEx International Standard

Remember: UPS requires a street address

Total \$ _____
 Sales Tax and Shipping Charges
 to be determined

Thanks for your order!
We appreciate your business!

Payment Method

C.O.D (Collect on Delivery) Established Account (PO# _____) Credit Card*

*If Credit Card is chosen, please complete the information below.
 VISA MasterCard American Express
 Card Number: _____
 Cardholder's Name: _____
 Expiration Date: _____
 Card Validation Value (CVV): _____ (VISA/MasterCard - 3 digit/American Express - 4 digit)
 Signature _____ Date _____



Parts Department

**Monday thru Thursday
6:00 a.m. to 4:00 p.m. Pacific Time**

**Friday
6:00 a.m. to 1:00 p.m.**

Email: orders@kvalinc.com

WWW.KVALINC.COM



Published on 10/1/2014