

RKG-4

ENTRY DOOR UPRIGHT CLAMP CONVEYOR

SPARE PARTS

Interior

Door Feeder

Jamb Routers

Exterior

Architectural

Patio Door Line

Automatic Saws

Entry Door Line

Pre-Fit Jamb

Bi-fold





Making Quality Door and Jamb Machinery Since 1947

INNOVATION | QUALITY | HONESTY

Order Today!
Call 1.800.553.5825

About KVAL Machinery

KVAL was started in the mid 1940's by AA Kvalheim. A Norwegian trained furniture maker, who turned to cabinetmaking and carpentry, and eventually machinery manufacturing after immigrating to the United States. One product produced in the mid 40's was a panel saw which helped expand the fledgling flush door industry that was developing around the Walled Lake, Michigan area. Early door sizing systems were supplied to companies like Young Door, Walled Lake, Arrow Door, and out on the west coast to Cal Wood Door.

In the mid 1950's, sons Andy and Irv Kvalheim joined in the business. As the company grew, so did the line of products. Door pre-hanging equipment was designed for distributors and high production equipment was designed for manufacturers producing pre-fit units. During the growth years of the 60's, the company continued as an innovator in the industry with automatic machines for jamb processing, casing trimmers and updated door sizers. As the 70's began, customers began demanding even more automation to cut labor costs and improve product quality. Kval responded with bi-fold door assembly and pre-hanging machines featuring fully automatic screw driving systems.

Today, Jerry, David, and Mark Kvalheim...the three grandsons of AA Kvalheim have joined the firm. The company family has also grown to include George Kameoka as head engineer, and Mark Smith as one of the managing partners.

KVAL products have continued to evolve and are now faster than ever, but are easier to set up, and produce higher quality doors than ever before. Recent technical innovations include CNC controls and the complete replacement of air logic control systems with solid state programmable controllers. Fully automatic positioning and sequencing for door and jamb equipment. Digital readouts with touchscreen controls to guarantee accurate setup and operation. When looking for quality door, jamb, casing, and related machines, look to the leader in the industry for over six decades!

Look to KVAL!!!

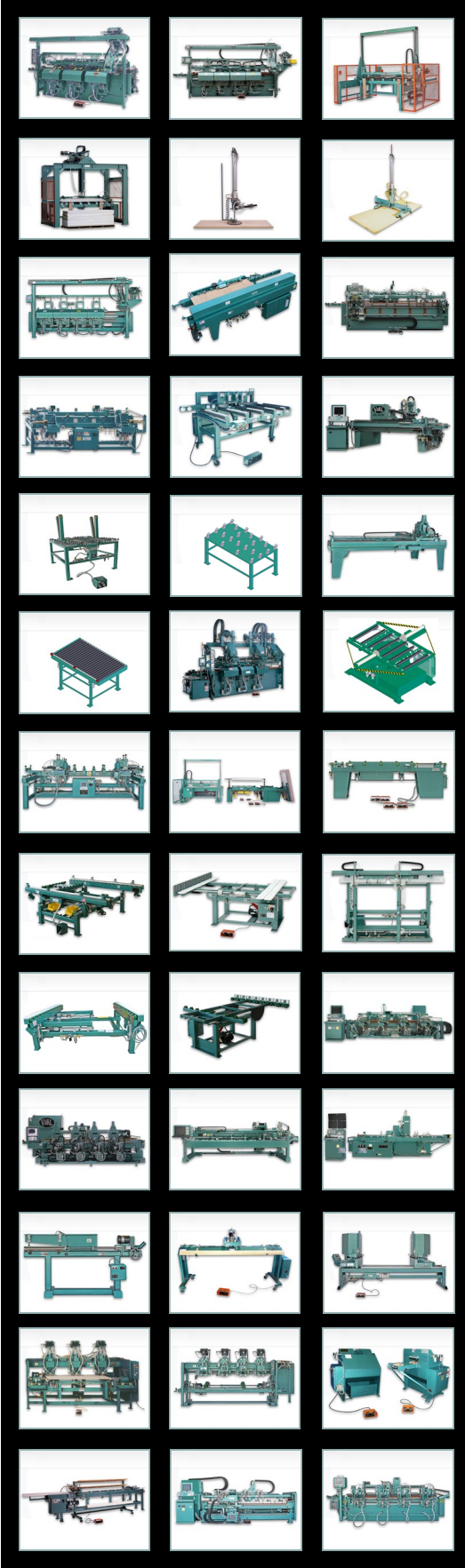


© KVAL Inc. All rights reserved

This document may not be copied, photocopied, reproduced, transmitted, or translated in any form or for any purpose without the express written consent of KVAL Inc.
KVAL Inc. reserved the rights, without notice, to change design and construction of any products.

Price are subject to change without notice.
Errors in description, photography, or typographical errors are subject to correction.

Printed in the United States of America
Published on 10/1/2014



To see our full line of products,

go to kvalinc.com and type in

RKG-4

Find

RKG-4

RKG-4

RKG-4 Entry Door Upright Conveyor makes easy work of installing sidelight panels in steel, fiberglass, or wood door units with sidelights, or patio door units.

The RKG-4 is designed to receive assembled door units in a vertical orientation from the RKG-3 Tilt-Up Machine. The door unit is tilted all the way up and over to 6 degrees past vertical so the unit is leaning on the exterior side. In this position the door unit is easily rolled to the clamp station. At this station the door unit is clamped against a fence that holds the door unit vertical so the door can be opened. The RKG-4 is also equipped with a momentary sill clamp release, so the frame can be squared to the door before the sidelight panels are secured. This ensures that the frame will be square after the sidelights are installed.

The RKG-4 is also equipped with a special clamping system that will press the sidelight panels into the sealing compound. The clamps are air-actuated and are controlled by a single push/pull valve, enabling one operator to easily and safely install each sidelight panel. After the panels are seated, the operator can open the door to secure the sidelight panels through the mull posts. After the sidelight panels have been installed, the door unit is unclamped so it is leaning against the brick mold. In this position the door unit can easily be rolled to the next station.

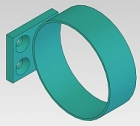
The standard machine will accommodate doors 6'8" high and doors that vary in width from 2'6" to 3'0".

With the 8'0" door capacity option, the machine can be set up to accommodate doors that vary in height from 6'6" to 8'0". To change the machine to accommodate different height doors, the entire upper guide assembly and clamps are raised or lowered by turning screws at four locations. For 8'0" high door units the operator will need a movable platform of some type to reach the tops of the door units. The platform unit is not included. The RKG-4 will accommodate jambs up to 6-9/16" wide.

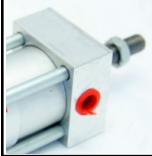




RKG-4

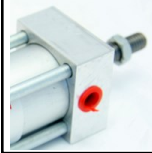


Screw Gun Holder Mount Assembly, Includes spiral wrap encasement & (2) 1/4-20 X 5/8LG FH
KVAL P/N: 536A



Cylinder, Advance, 240 X 1-1/2"

KVAL P/N: ADV240A19



Cylinder, Advance, 240 X 6"

KVAL P/N: ADV240A1V



Cylinder, Advance, Hardware, 240 & 300 Series, Clevis

KVAL P/N: ADV240M01



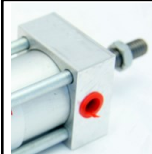
Cylinder, Advance, Hardware, 240 Series, Clevis Double Mount With Pin & Snap Rings.

KVAL P/N: ADV240M02



Cylinder, Advance, Hardware, 240 Series, Clevis Eye Mount, Single

KVAL P/N: ADV240M03



Cylinder, Advance, 300 X 12"

KVAL P/N: ADV300A28



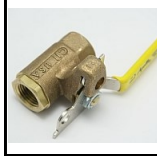
Motor 1 HP 1725 RPM TEFC 56C 208-230/460

KVAL P/N: BALVM3546



Safety Exhaust Ball Valves, 1/4" NPT

KVAL P/N: BBVALVE04



Safety Exhaust Ball Valves, 1/2" NPT

KVAL P/N: BBVALVE08



Black End Cap for BikeGrips

KVAL P/N: BIKE-EC07



Handle Bar Grips, Black, 5" Long

KVAL P/N: BIKEGRIPS



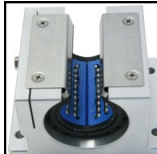
Idler, #50 Chain, 15T X 5/8" Bore Sprocket

KVAL P/N: BROHB5003



Bearing, FB 260 X 1", 2 Hole Mount, Setscrew Locking Relube.

KVAL P/N: HUBFB2603



Bearing, 1-1/2" Open Super Linear Pillow Block

KVAL P/N: INASPB240



Wheel, 3" Dia. X 1-1/4" Wide 3/8" ID Wheel With Simi Precision Roller Bearing

KVAL P/N: INDXS0303106

To see our full line of products,

go to kvalinc.com and type in

RKG-4

Find

RKG-4

RKG-4



Chain, Connecting Link, 50 Chain

KVAL P/N: LIN500001



Pad, Delrin 1-3/4" Dia X 3/4" Long, 3/4-10 NC Thread, Special Hub for WESPT5112 Wheel

KVAL P/N: P281212FH



Regulator, 1/4" Mini With Check Valve (1/8" Body with 1/4" Ports)

KVAL P/N: SMC20001R



Regulator, Bracket, 1/4" Mini

KVAL P/N: SMC20001Y



Filter, 1/2" With Auto Drain, SMC, AF40-N04D-Z

KVAL P/N: SMC40004F



Regulator 1/2" NPT, SMC, AR40K-N04-Z

KVAL P/N: SMC40004R



Regulator, SMC, 1/2" NPT Port With Back-flow Mechanism With Gauge

KVAL P/N: SMC40004R-K



Pressure Gauge, SMC, K40, 1/8 NPT Thread, 160 PSI

KVAL P/N: SMCK10



INNOVATION | QUALITY | HONESTY

Billing Address

Company: _____
 Your name: _____
 Address: _____
 City/State/Zip: _____
 Phone: _____

Shipping Address

Company: _____
 Your name: _____
 Address: _____
 City/State/Zip: _____
 Phone: _____

Quantity	Part Number	Item Description	Unit Cost	Total Cost

Shipping Preference

- | | |
|--|---|
| <input type="checkbox"/> UPS Next Day Early AM | <input type="checkbox"/> FedEx Priority Overnight |
| <input type="checkbox"/> UPS Next Day | <input type="checkbox"/> FedEx Standard Overnight |
| <input type="checkbox"/> UPS 2nd Day | <input type="checkbox"/> FedEx 2nd Day |
| <input type="checkbox"/> UPS 3 Day Select | <input type="checkbox"/> FedEx Express Saver |
| <input type="checkbox"/> UPS Ground | <input type="checkbox"/> FedEx International Priority |
| <input type="checkbox"/> Common Carrier | <input type="checkbox"/> FedEx International Standard |

Remember: UPS requires a street address

Total \$ _____

Sales Tax and Shipping Charges to be determined

**Thanks for your order!
We appreciate your business!**

Payment Method

C.O.D (Collect on Delivery) Established Account (PO# _____) Credit Card*

**If Credit Card is chosen, please complete the information below.*

VISA MasterCard American Express

Card Number: _____
 Cardholder's Name: _____
 Expiration Date: _____
 Card Validation Value (CVV): _____ (VISA/MasterCard - 3 digit/American Express - 4 digit)
 Signature _____ Date _____



Parts Department

**Monday thru Thursday
6:00 a.m. to 4:00 p.m. Pacific Time**

**Friday
6:00 a.m. to 1:00 p.m.**

Email: orders@kvalinc.com

WWW.KVALINC.COM



Published on 10/1/2014